

ALL AROUND COLOR

Worksurface edging matches the frame selection as the default option, but you have the choice of combining a coordinated worksurface and edge. Grade levels in edge options are listed only to assist with cross-referencing the coordinating worksurface laminates on the graded color cards.

To discuss finish options, please contact your sales representative or call 800.678.5550. Note that there may be slight variations in color and texture between the printed card and the actual product.



18525 Trimble Court, Spring Lake, MI 49456
800.678.5550 | interiorconcepts.com

WOODGRAIN COORDINATING COLORS (Grades 1, 2, and 3: G1/G2/G3)



G1: Amber Maple



G1: Ginger
Root Maple



G1: Pecan
Woodline



G1: Cocoa Maple



G1: Smoky
Brown Pear



G2: Breve



G2: Hardrock
Maple



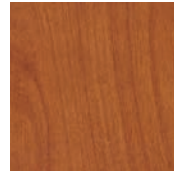
G2: Fusion Maple



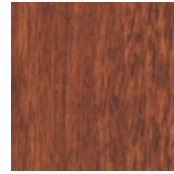
G2: Monticello
Maple



G2: Pearwood



G2: Wild Cherry



G2: Shaker
Cherry



G2: Babbling
Brook



G2: Nightfall



G3: Simplicity



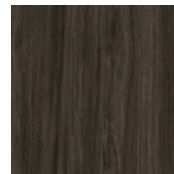
G3: Oatmeal
Cookie



G3: Pralines
& Cream

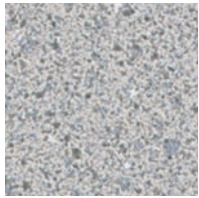


G3: Sleeping In



G3: Rugged Trail

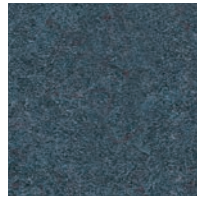
PATTERN COORDINATING COLORS



G2: Grey Glace

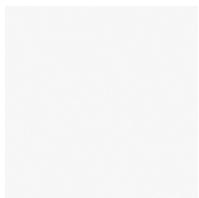


G2: Grey Nebula



G2: Navy Legacy

SOLID COORDINATING COLORS (BRIGHTS)



White



Stop Red

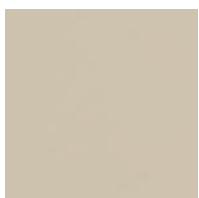


Spectrum Blue



Atlantis Navy

METAL COORDINATING COLORS



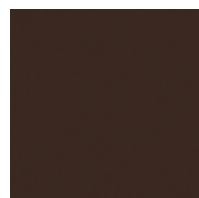
Taupe



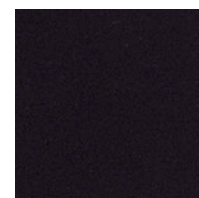
Gray



Platinum



Dark Brown



Charcoal